

# Manual Bi-Folding Door System E-150





Door Access Solutions for Commercial, Institutional and Residential projects in Hong Kong and Macau.

We are offering a wide portfolio of Products & Solutions including Automatic Doors, Windows & Entrance, Hardware & Interior Doors, Security Gates, Access Control and Industrial Doors.

Service is our Value - we provide Technical Advice & Customized Drawings, Ironmongery Schedules, Master Key Plans, Supply & Installation, Contracting, Training and Service & Maintenance programs and Sourcing.



Key partners & suppliers include GILGEN Door Systems, AIR-LUX Window Systems, DORMAKABA Security Solutions, EFAFLEX High-Speed Doors, TBS Biometric Solutions, HART Door Systems, TECKENTRUP Security Steel Doors, WE Shutters and many other premium suppliers.

Our experienced team with its in-depth market knowledge, product know-how and business experience is driving AUB Ltd to become a leading brand in the Industry.

	<u>Page</u>
▪ Introduction	4 - 5
▪ Opening Options	6 - 7
▪ Product Details	8
▪ Testing	9
▪ Specification	10
▪ Key Features	11
▪ Typical Drawings	12 - 15
▪ Site Installation	16
▪ Operational Procedure	17 - 18
▪ Job References	19

## Why E-Fold ?

### Reliable

E-Fold door systems will provide years of trouble-free operation, backed by a 10 year warranty. The system components have been designed with longevity in mind, using materials chosen for their strength and corrosion resistance. Most of the main components are tested to 20,000 - 50,000+ cycles and corrosion testing (including salt spray exposure for at least 600 hours).



The systems also offer the unique feature of both horizontal and vertical adjustment. This compensates for building movement and out-of-alignment openings, allowing doors to operate smoothly even in imperfect conditions.

### Freedom of Design

E-Fold door system suits every application, giving you the freedom of design to achieve the exact folding opening you want.



**Secure**

E-Fold door system hardware is completely secure through a combination of innovative design and robust materials. The stainless steel fittings are mostly concealed, and any accessible hardware cannot be removed or tampered with. Hinges are secure with hidden hinge cap fasteners.

**Weatherproof**

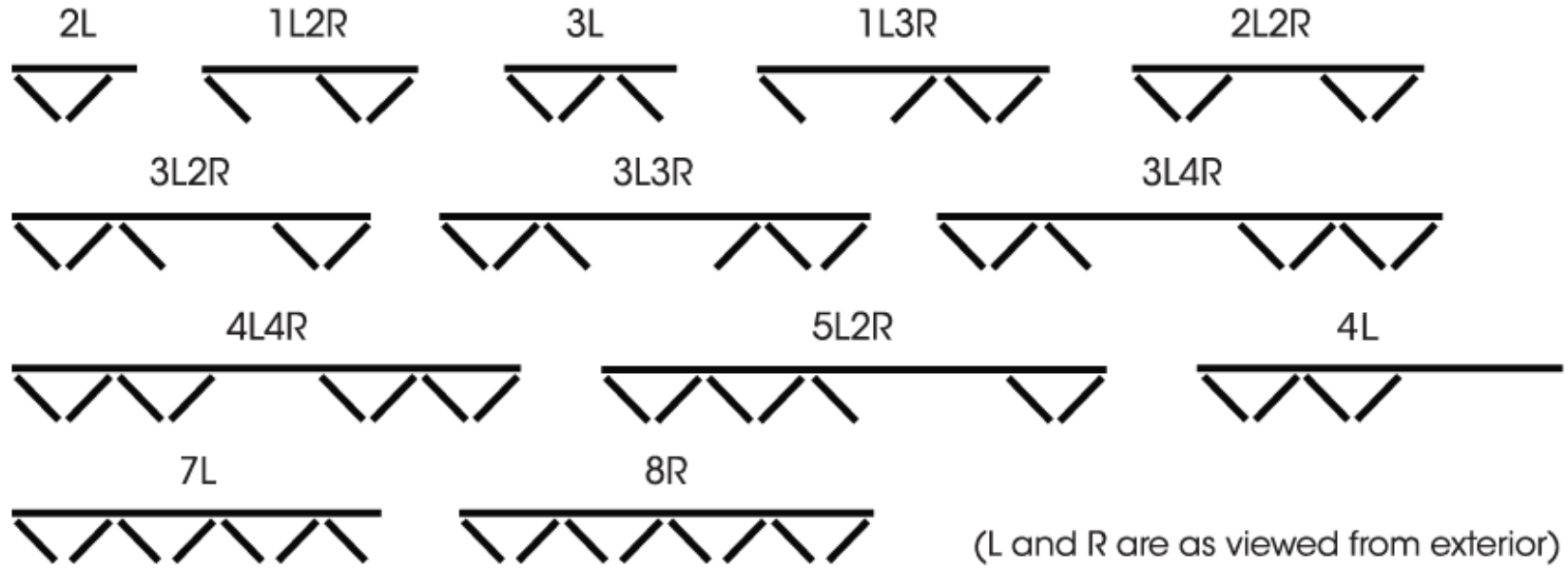
E-Fold invented the system that allowed folding doors to pass weather tests for the very first time in 1998. All E-fold Bi-folding systems use this innovative technology, so you can be confident your folding system will protect your home from the weather.

**Fingertip operation**

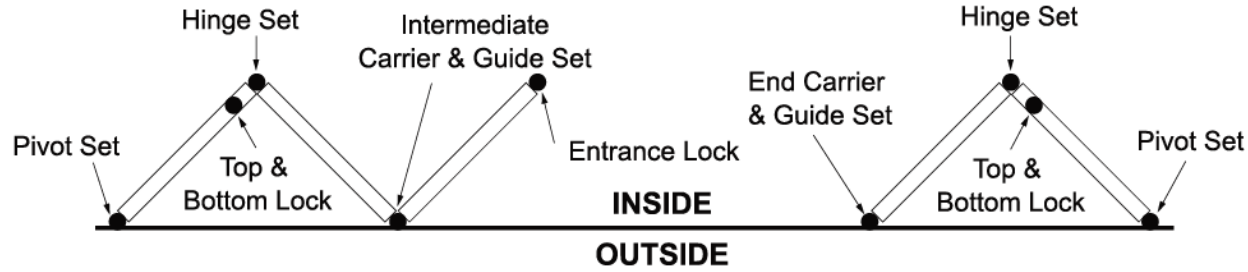
Every E-fold Bi-fold door can be operated with just the touch of fingertip, even at their maximum specifications. E-Fold's largest system can carry up to 8+8 panels weighing up to 150 kg each. Even almost a tonne of doors is a breeze when moved by its components.

## Typical configurations

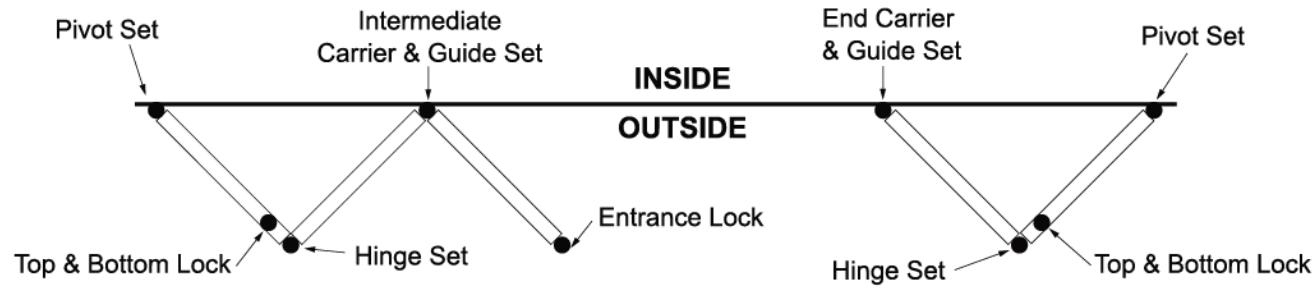
Maximum 8 panels + 8 panels



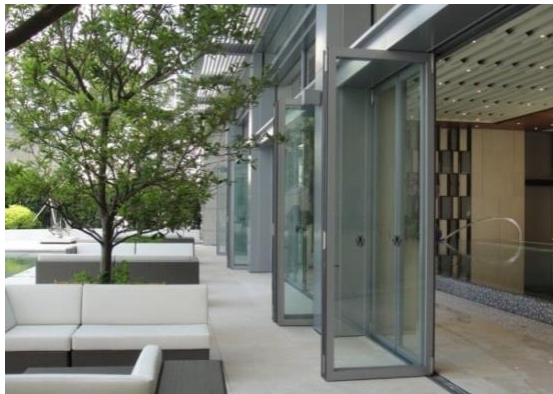




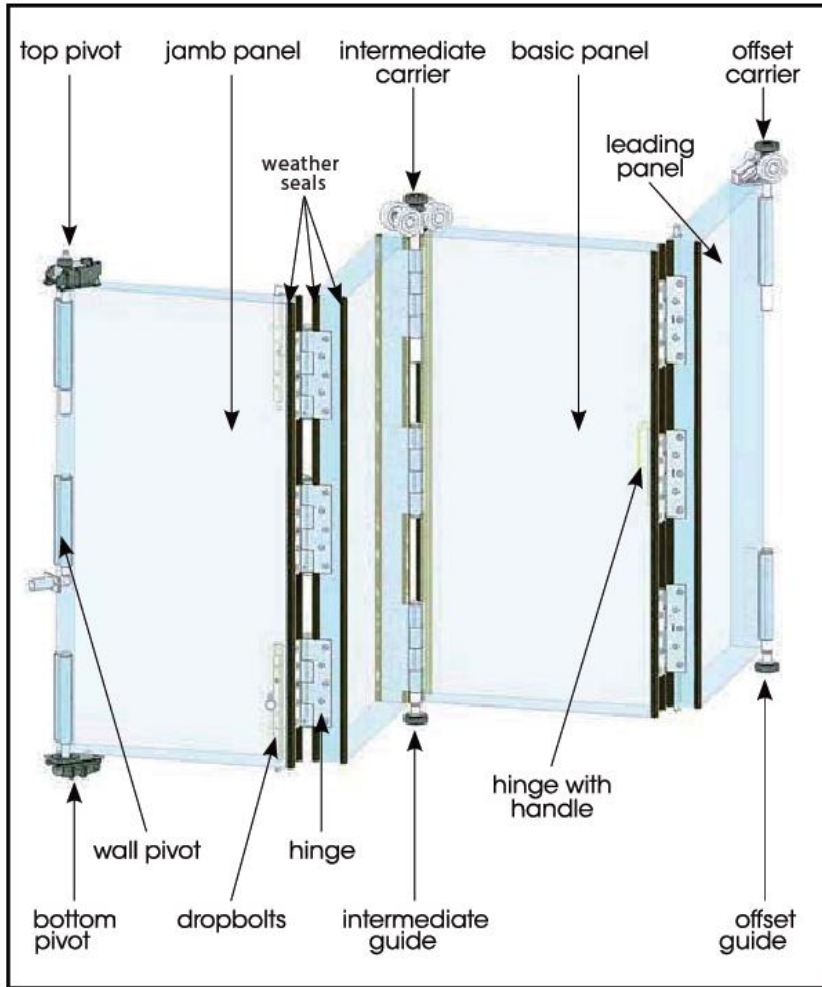
**Panels  
Opening Inward**



**Panels  
Opening Outward**



**E150 Manual Bi-Fold door system hardware**



**Outward opening configuration**



- 1) P83001P Handle
- 2) E4 HSS Hinge set
- 3) E4 OCSS offset carrier hinge set
- 4) E4PSS Pivot Hinge set
- 5) E4 ICSS Intermediate carrier hinge set
- 6) Locking Bolt
- 7) Two point top & bottom lock 1233.30



## Tested in Hong Kong Including Water Penetration, Air Infiltration and Wind Load

香港幕牆檢測中心有限公司  
**Hong Kong Curtain Wall Testing Centre Ltd.**  
 Unit 1207, 12/F, Block A, New Trade Plaza, 6 On Ping Street, Shatin, N.T., Hong Kong  
 Tel: (852) 2687 6122 Web site: www.curtainwalltest.com  
 Fax: (852) 2690 0122 e-mail: enquiry@curtainwalltest.com



Project : Eclipse E4 Folding Door  
 Test Specimen : Folding Door

Report No.: CW-0100R11576  
 Page : 9 of 12

C.S Photos



Door Illustration



Water Penetration Test

Hong Kong Accreditation Service (HKAS) has accredited this laboratory under the Hong Kong Laboratory Accreditation Scheme (HOKLAS) for specific laboratory activities as listed in the HOKLAS directory of accredited laboratories. The results shown in this test report were determined by this laboratory in accordance with its terms of accreditation. This report shall not be reproduced except in full and with prior written approval from the Hong Kong Curtain Wall Testing Centre Ltd.



香港幕牆檢測中心有限公司  
**Hong Kong Curtain Wall Testing Centre Ltd.**  
 Unit 1207, 12/F, Block A, New Trade Plaza, 6 On Ping Street, Shatin, N.T., Hong Kong  
 Tel: (852) 2687 6122 Web site: www.curtainwalltest.com  
 Fax: (852) 2690 0122 e-mail: enquiry@curtainwalltest.com



Project : Eclipse E4 Folding Door  
 Test Specimen : Folding Door

Report No.: CW-0100R11576  
 Page : 10 of 12



hinge

meeting stile

end clip

bottom roller

Hong Kong Accreditation Service (HKAS) has accredited this laboratory under the Hong Kong Laboratory Accreditation Scheme (HOKLAS) for specific laboratory activities as listed in the HOKLAS directory of accredited laboratories. The results shown in this test report were determined by this laboratory in accordance with its terms of accreditation. This report shall not be reproduced except in full and with prior written approval from the Hong Kong Curtain Wall Testing Centre Ltd.



香港幕牆檢測中心有限公司  
**Hong Kong Curtain Wall Testing Centre Ltd.**  
 Unit 1207, 12/F, Block A, New Trade Plaza, 6 On Ping Street, Shatin, N.T., Hong Kong  
 Tel: (852) 2687 6122 Web site: www.curtainwalltest.com  
 Fax: (852) 2690 0122 e-mail: enquiry@curtainwalltest.com



Customer Address :

Report No. : CW-0100R11576  
 Page : 1 of 12

Project : Eclipse E4 Folding Door  
 Test Specimen : Folding Door

Date of Test : 5 & 10 Jan 2011  
 Date of Issue : 31 January 2011

### Test Report

A folding door unit was delivered & installed at our laboratory by the customer in January 2011 for testing. The following test was conducted on 5 & 10 January 2011 & the test results are recorded in the following table.

Item	Tests & Sequence	Testing Standard or Specification	Compliance
1	Preload to 50% inward design pressure	ASTM E330-2002	yes
2	Air Infiltration Test	ASTM E283-2004	yes
3	Water Penetration Test under Static Inward Pressure	ASTM E331-2000	yes
4	Water Penetration Test under Cyclic Pressure	ASTM 547-2000	yes
5	Structural Wind Pressure Test under Static pressure	ASTM E330-2002	yes

Refer to Appendix A to C for details of the test specimen, test methodology, performance requirements & test results which form part of this report.

Tested by : Mr. Wong Kam Cheung

Authorised Signatory : Mr. Albert Leung

Checked by :

Form TR011

Issue 5 issued 24.2.2007

Hong Kong Accreditation Service (HKAS) has accredited this laboratory under the Hong Kong Laboratory Accreditation Scheme (HOKLAS) for specific laboratory activities as listed in the HOKLAS directory of accredited laboratories. The results shown in this test report were determined by this laboratory in accordance with its terms of accreditation. This report shall not be reproduced except in full and with prior written approval from the Hong Kong Curtain Wall Testing Centre Ltd.

	E100	E150
Max opening width	16000mm	17600mm
Max door panel weight	115kg	150kg
Max opening height	3000mm	3500mm
Max door panel width	1000mm	1100mm
Max number of panels	16 (8 left + 8 right)	16 (8 left + 8 right)
Max glass thickness	10mm	28mm
Opening	Inward of outward left right or left and right	

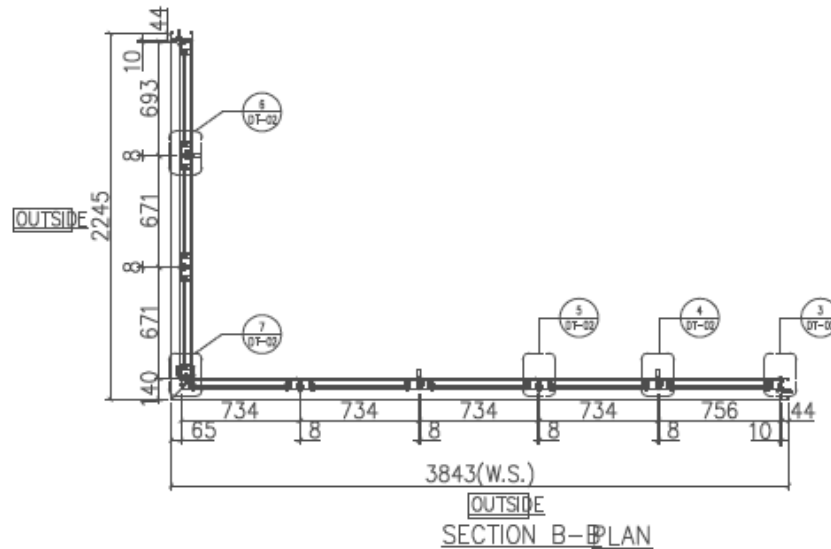
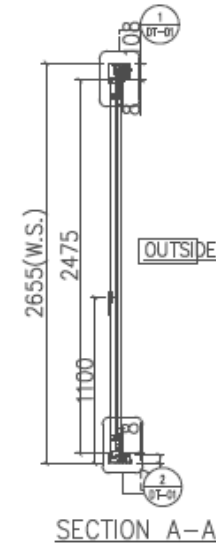
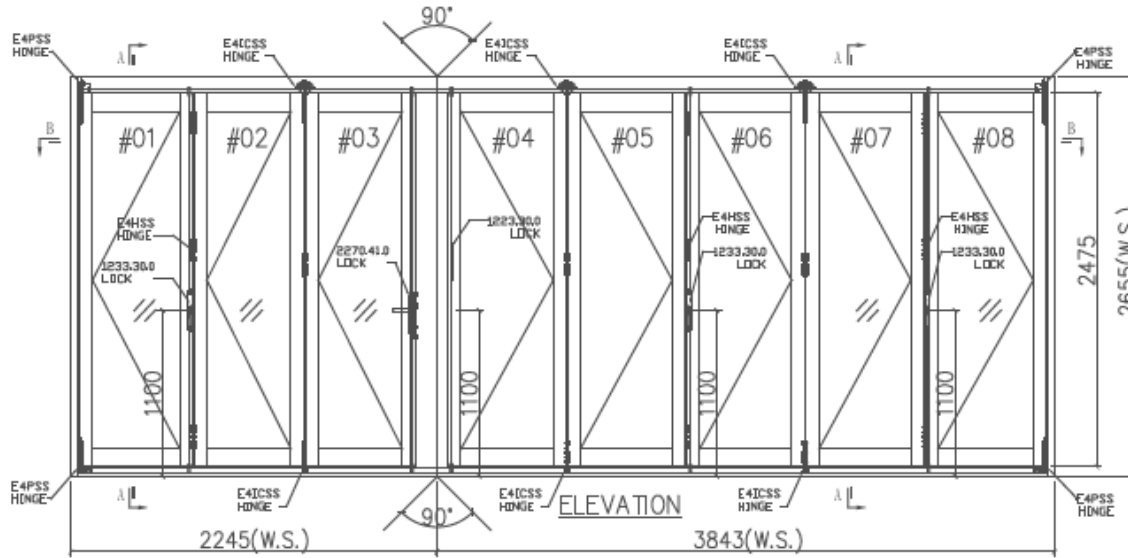
## Summary of test result

Test	Testing standard or specification	Result	Observation	Result
Air infiltration test	ASTM E283-2004	+300pa	No leakage	Satisfactory
Water penetration test static and cyclic	ASTM E331-2000 ASTM E547-2000	1000pa	No leakage	Satisfactory
Structural wind pressure test	ASTM E330-2002	+5.6kpa -5.6kpa	Deflection satisfactory No damage	Satisfactory

- ❖ Inward and Outward opening
- ❖ Left- or Right-side folding
- ❖ Maximum Opening Width 17600mm
- ❖ Maximum Panel dimension 1100Width x 3500Height
- ❖ Maximum Panel Weight 150kg (E150)
- ❖ Maximum Number of Panels 16 leaves (8+8)
- ❖ Maximum Glass Thickness 28mm
- ❖ Top-hung with top track and carrier
- ❖ Aluminium profiles strength of minimum 3mm in PVF2 3-coating
- ❖ Hardware in Stainless steel 316
- ❖ Carrier pin lock system to ensure vertical and horizontal adjustment after installation and smooth operation
- ❖ Panels with tight pressure against weather seal
- ❖ 10 year warranty on Frame Finishes

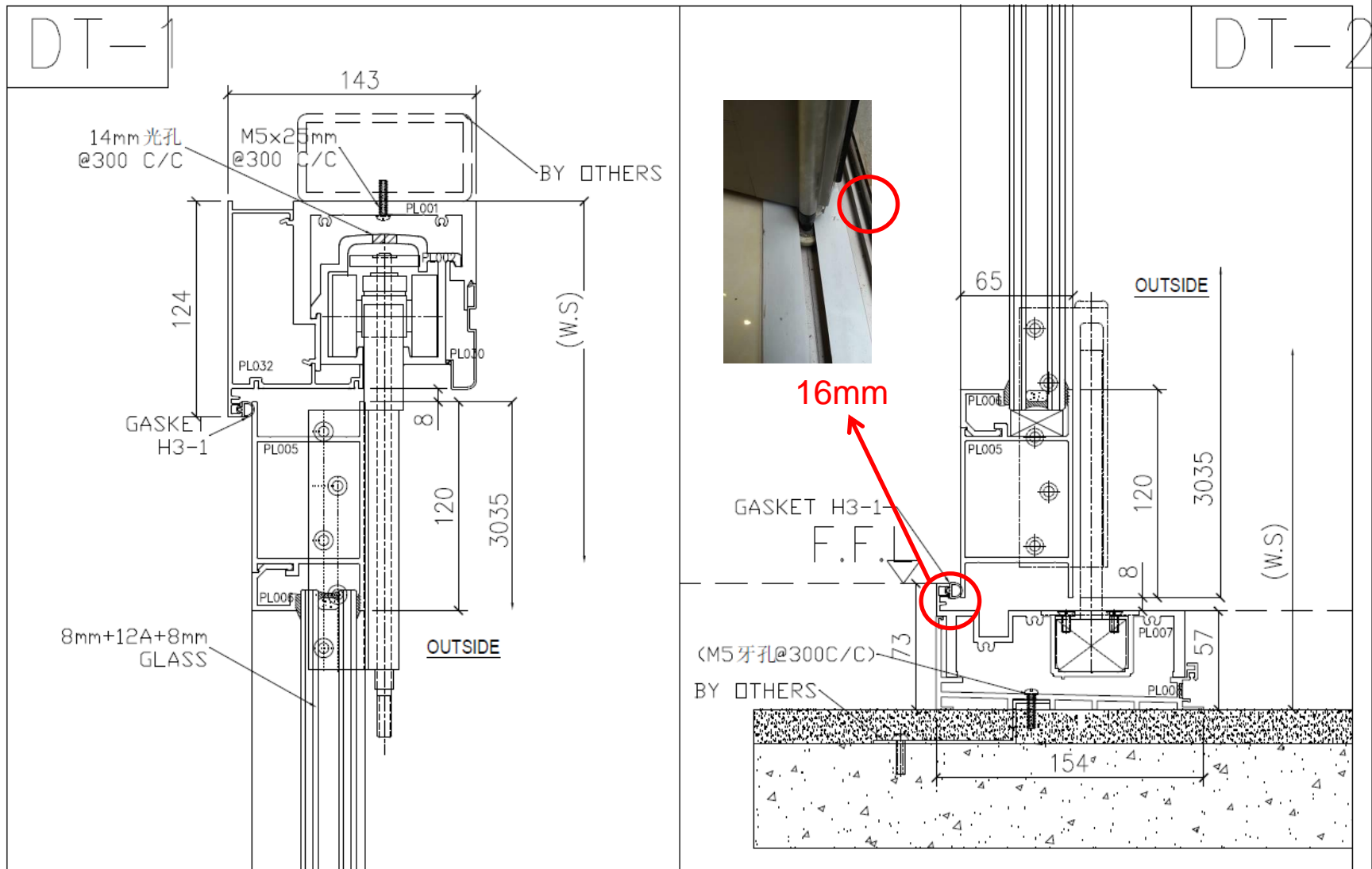


## Typical Bi-parting Opening with 90° Corner solution

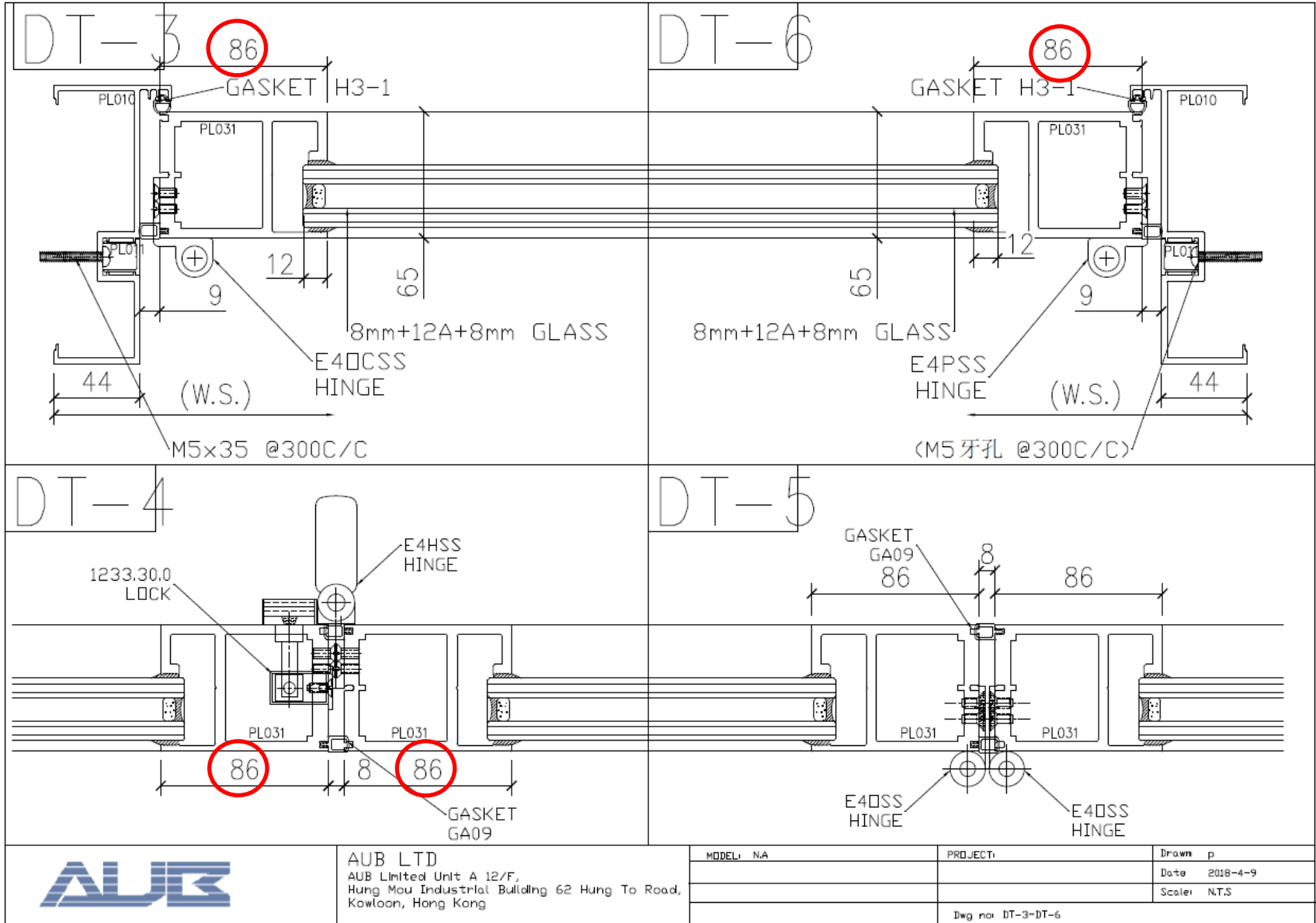


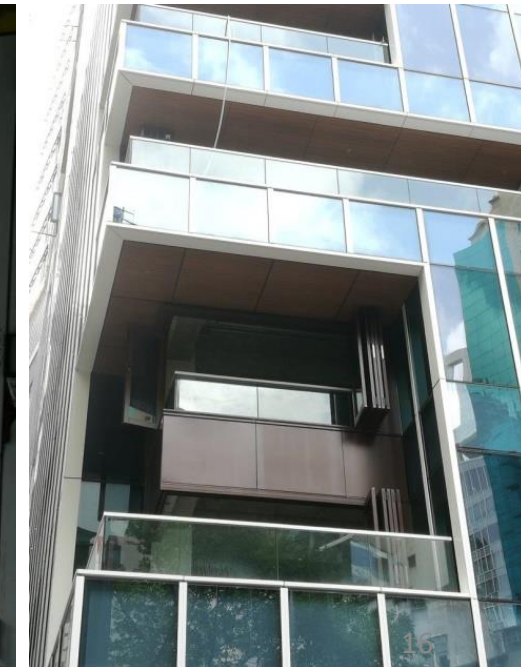
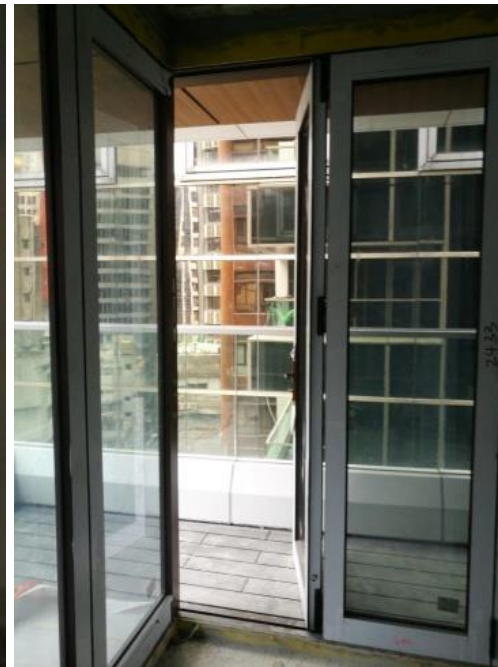
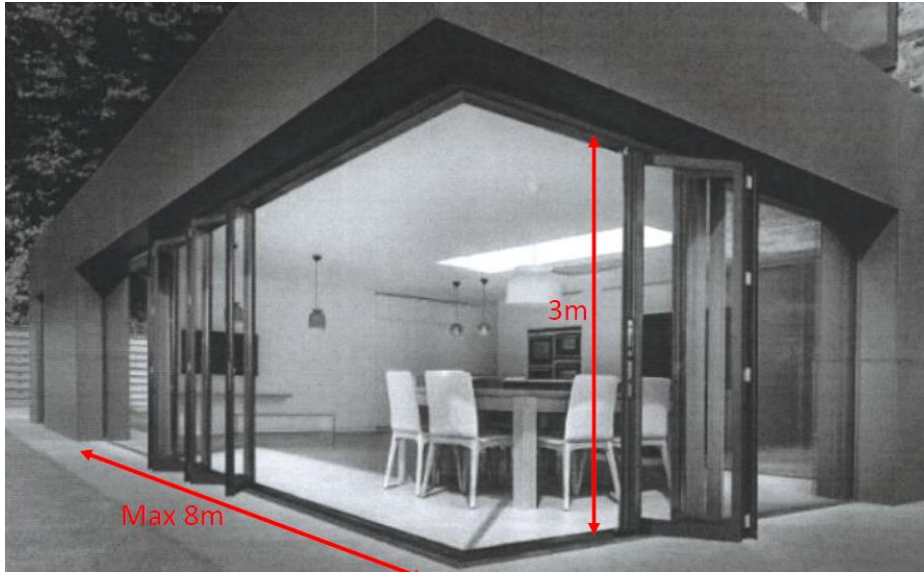
LOW BLOCK





	<p>AUB LTD AUB Limited Unit A 12/F, Hung Mou Industrial Building 62 Hung To Road, Kowloon, Hong Kong</p>	MODEL: NA	PROJECT:	Drawn p
				Date 2018-4-9
			Dwg no: DT-1, DT-2	Scaler: N.T.S







## Bi-fold door opening procedure ( 2 left + 2 right )



1) Bi fold Door in closing position



2) Turn the lower handle lock clockwise direction upward for opening showed as above photo



3) Push the door panels to the side as the above arrow shows to the left



4) Pay attention to your figures position to avoid fingers will be clamped



5) Turn the lower handle lock clockwise direction upward for opening



6) Push the door panels right direction to the side as above photo to finish opening

## Bi-fold door closing procedure ( 2 left + 2 right )



1) Bi fold Door in opening position



2) Pull door panels on left hand side toward to the middle for closing



3) Pull door panels on left hand side toward to the middle for closing



4) Turn the handle lock downward to lock the door.as above photo



5) Pull door panels on right hand side toward middle.



6) Pull the upper handle and use another hand to lock the door (as photo bellows)





**Stanley Clubhouse**



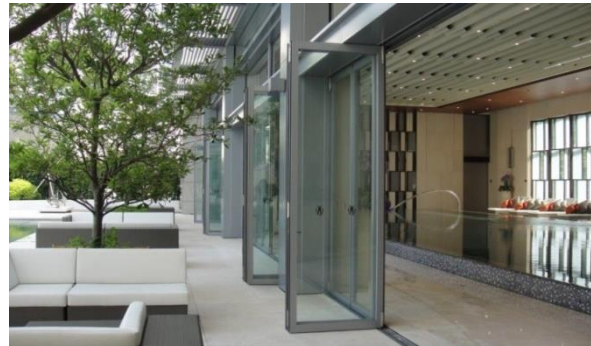
**HK Science Park**



**HK Ocean Park Marriott Hotel Marina Café**



**The One 18/F**



**Apleichau Road Clubhouse**



**39 Conduit Road**



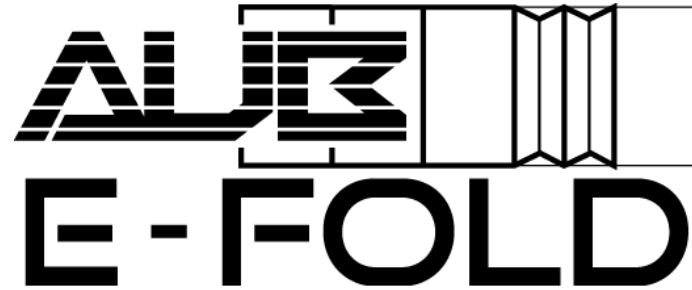
**China Congregational Church**



**Hoi Fai Road Clubhouse**



**Lai Chi Kok Swimming Pool**



**AUB Limited**  
**Unit A, 12/F, Hung Mou Industrial Building,**  
**62 Hung To Road, Kwun Tong,**  
**Kowloon, Hong Kong**  
**Tel: +852 2375 6110**  
**Fax: +852 2406 2602**  
**enquiry@aub.com.hk**  
**www.aub.com.hk**